



ZANATTA VETRO
THE EXCELLENCE IN GLASS

COMPANY PRESENTATION

CONTENT

_ CORPORATE OVERVIEW

_ PRODUCTION CAPABILITES

_ QUALITY AND CERTIFICATIONS

_ SERVICES

_ PROJECT REFERENCES

CORPORATE OVERVIEW

A wide-angle, low-perspective shot of a modern corporate building with a glass facade. The building is composed of large, dark-tinted glass panels that reflect the sky and surrounding environment. The structure is angular, with a prominent corner in the foreground. To the right, a circular architectural element with a white balcony or walkway is visible. The sky is a clear, vibrant blue with a few wispy white clouds. The ground in the foreground is a light-colored, paved area with some blue-painted lines. Several parking signs with the letter 'P' are visible along the base of the building.


ZANATTA VETRO

Since its foundation in 1972, Zanatta Vetro, with its pioneering spirit, has established itself as a premium glass fabricator, first of insulating glass and then, thanks to continuous investments in new equipment over the years, of oversize insulating, heat treated and laminated glass, focusing on the architectural, naval and interior glass markets.

The extensive experience of its 80 employees with superior technical skills, combined with a passion for the material and modern production methods using the state-of-the-art automated technology, provide a comprehensive glass fabrication system capable of producing customized solutions in almost any shape and size to the highest level of perfection, guaranteeing high reliability and meeting the delivery dates agreed.

Today, Zanatta Vetro from its historic 376,700 sq.ft. (35,000m²) headquarters in Montebelluna (TV) - Italy, where the offices, factory and warehouse are currently located, offers customized full-service solutions, transforming flat glass to create:

- Tempered, laminated and heat soaked glass up to 295"x126".
- Insulating glass for commercial projects up to 295"x129".
- Screen-printed glass up to 204"x102".



"At ZanattaVetro, our relentless commitment is to deliver unparalleled quality by consistently investing in innovation. We strive to exceed customer requirements and fulfill their unique needs with exceptional production flexibility."



50+ YEARS OF GLASS EXPERIENCE

Zanatta Vetro was founded in 1972 as an insulating glass fabricator, pioneering the technology of gas-filled air spaces to provide optimum insulation.

100% IN-HOUSE TECHNOLOGICAL CYCLE

With a commitment to excellence, Zanatta Vetro operates as a fully autonomous glass factory, managing all glass processes in-house, refraining from outsourcing or relying on contractors.

OVERSIZED GLASSES 3210 x 7500 mm

we can fabricate jumbo glasses up to 126,4" x 295,3"

SUPERIOR QUALITY

From raw material to the final stage of glass processing, Zanatta Vetro employs meticulous quality control, incorporating robotic optical inspection for flawless insulated glass products.

CUSTOMER CENTRICITY

Zanatta Vetro is dedicated to delivering on client needs in time, always finding the right and appropriate solutions with a focus on customer satisfaction.

HISTORY

- 1972 Zanatta Vetro was founded, the first fabricator in Italy to introduce insulating glass with Argon gas inside, inaugurating the trend towards the use of glass with high thermal performance.
- 1985 Moved into a brand new 43,055 sq.ft (4,000 m²) complex where it introduced new glass processing technologies, first and foremost the automatic line for the manufacture of insulating glass units measuring 12.8' x 8.5' (3,900 mm by 2,600 mm).
- 1990 Launched the high performance magnetronic coated glass in Italy, acquiring all the necessary technology to process it.
- 2007 focused on large dimensions, investing in unique technologies capable of processing and tempering glass of very large dimensions: 10.5' high by 19.7' long (3,210 mm x 6,000 mm).
Zanatta was the first glass fabricator in Europe to produce tempered insulating glass of this jumbo size.
- 2008 Received 'the 2008 Reed Business Information Glassworks Award' as the best-equipped and most technological glass factory.
- 2012 Continued to expand, adding a further 32,292 sq.ft (3,000 m²) to the complex, where a large-scale laminated glass machine was installed. Zanatta Vetro became completely autonomous, carrying out all flat glass processing in-house, without subcontractors.
- 2023 Zanatta Vetro has joined the Brombal Group, a pool of Italian companies that are leaders in the production of luxury windows and doors with a strong focus on international markets. With this operation, Zanatta Vetro renews its ambition to satisfy the global market of excellence.



PRODUCTION CAPABILITIES

PRODUCTION CAPABILITIES

	CUTTING	126.4" x 295.3"	4 centers for cutting complex shapes from laminated, bullet-proof and monolithic glass up to ¾"(19mm) thick.
	GRINDING & DRILLING	126.4" x 295.3"	Grinding, CNC grinding and drilling workstations.
	EDGEWORKING	126.4" x 295.3"	4 machinery centers capable of complex shapes edge treatment: grinding, polishing, arrising, bevelling.
	TEMPERING, HEAT-STRENGTHENING & HST	126.4" x 295.3"	Dual chamber furnace with preheating chamber to minimize distortions; glass up to ½" (25 mm) thick; Heat treatment of both high selective and hard low-e coatings, magnetron, pyrolytic and double-sided coatings
	LAMINATION	118.1" x 295.3"	Vacuum bags process availability; lamination with PVB, acoustic interlayers, SGP, EVA, DG41, coloured PVB interlayers. Lamination of non-standard materials: Sefar Mesh
	ENAMELLING	118.1" x 295.3"	Hot enamelling; standard and metallic RAL colors; Possibility to match any color from other color charts
	SCREEN-PRINTING	102.4" x 204.7"	
	INSULATING	126.4" x 295.3"	Low-e, gas and safety double and triple glazing up to 2.28" (58 mm) thickness for any geometric shape. Stepped edges up to 60" (1,500 mm); different sealing depths with possible insertion of structural elements.



QUALITY AND CERTIFICATIONS

QUALITY



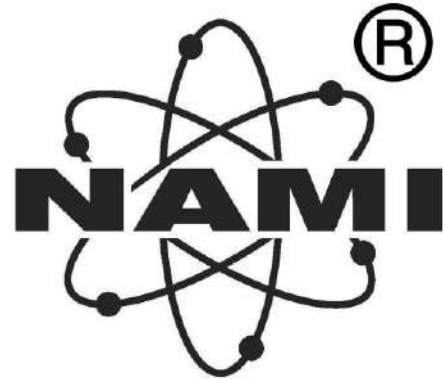
Inspection of incoming materials. Constant monitoring of the product during fabrication. Internal process audit.

SYSTEM QUALITY



Our quality and production systems are regularly audited by third party organisations that verify our compliance.

INTERNATIONAL PRODUCT CERTIFICATIONS



SUPPLIERS

GLASS

AGC


SAINT-GOBAIN

 GUARDIAN®
GLASS

NSG
GROUP

SPECIALITY MATERIALS

kuraray
Possible starts here

SCHÜCO

 FERRO

DOWSIL™
silicones by 

S E F A R


SUPPLIER CERTIFICATIONS



SentryGlas®

Trosifol®

SERVICES



SERVICES

COST
ESTIMATION



CUSTOMER
SERVICE



PACKING AND
LOGISTICS



PROJECT
MANAGEMENT





PROJECTS

PORCELANOSA BUILDING

Location New York City, NY

Surface 1,200 m²

Year 2015

Glazier Iteco

Architect Foster + Partners



DOUBLE GLAZING

Outboard lite: 8mm low-iron tempered + 1.52mm PVB + 8mm Cool-Lite 074 II tempered

Air space: 16mm Argon filled

Inboard lite: 88.2 low-iron annealed laminate

WALKWAY

12mm low-iron tempered + 1.52mm PVB + 12mm low-iron tempered

DIOR STORE

Location San Francisco, CA

Surface 1,000 m²

Year 2016

Glazier ESSE Quattro

Architect Peter Marino



DOUBLE GLAZING

Outboard lite: 10mm low-ion tempered

Air space: 16mm Argon filled

Inboard lite: 66.2 low iron annealed laminate with low-e

DOUBLE SKIN FACADE

10mm low-iron tempered

INNOVATION CURVE TECHNOLOGY PARK

Location Palo Alto, CA

Surface 9,000 m² curtain wall
5,000 m² glass fins

Year 2019

Glazier Simeon (IT)

Architect Form4 Architecture



DOUBLE GLAZING

Outboard lite: 6mm mid-iron tempered Sunguard SNX 60/28 HT

Air space: 16mm Argon filled

Inboard lite: 6mm mid-iron tempered

FINS

12mm mid-iron tempered + 1,52mm Vanceva PVB + 12mm mid-iron tempered

[More Pictures HERE](#)

RED HOOK LOFTS

Location Brooklyn, NY

Surface 4,500 m²

Year 2016

Glazier Archiglaze

Architect BluArch



DOUBLE GLAZING

Outboard lite: 8mm mid-iron tempered Stopray Vision 50 T

Air space: 15mm, air filled

Inboard lite: 44.2 mid-iron annealed laminate

GALERIES LAFAYETTE

Location Luxembourg

Surface 4,400 m²

Year 2019

Glazier Simeon (FR)

Architect Foster + Partners

The transparent curtain walls are in double glazed units with selective coating while the opaque ones consist of a shadow box with very bright enamelled glass.

The geometry and the meticulous choice of curtain walls allow sunlight to illuminate the building and the surrounding urban context with special light effects.



TOUR ODÉON

Location Montecarlo, Monaco

Surface 9,000 m²

Year 2014

Architect Alexandre Giraldi



DOUBLE GLAZING

Outboard lite: 10mm low-iron tempered Energy NT
Air space: 15mm, Air filled
Inboard lite: 10mm low-iron tempered
8mm annealed Stopsol Dark Blue

ELEVATOR AND ATTIC

PWC HEADQUARTERS

Location Luxembourg

Surface 11,000 m²

Year 2016



DOUBLE SKIN FACADE

12+12.2 mid-iron annealed laminate

KAFD Parcel 4.10

Location Riyadh, Saudi Arabia

Surface 7,500 m²

Year 2014



DOUBLE GLAZING

Outboard lite: 8mm mid-iron tempered Sunguard SN 51/28 HT

Air space: 20mm Argon filled

Inboard lite: 44.2 mid-iron annealed laminate

CATHAY PACIFIC LOUNGE - THE WING

Location Hong Kong Airport

Surface 19.2 m²

Year 2014

Architect Norman Foster+
Partners

The Wing project is a glass and light sculpture positioned inside the Hong Kong airport, as symbol of the Cathay Pacific airline's VIP lounge.

The Wing lamp is made up of 20 ultra-clear glass blades standing 3.2 metres high. Each is shaped differently from the other and is decorated with engravings which, lit up by LED sources hidden in the base, produce a breathtaking effect.



WALLS

10+10 mid-iron annealed laminate

INTERNAL FINS

19mm mid-iron bevelled glass

[More Pictures HERE](#)

BEN GURION AIRPORT CONTROL TOWER

Location Tel Aviv, Israel

Surface 250 m²

Year 2016



DOUBLE GLAZING

Outboard lite: 15mm mid-iron tempered + 1.52mm SGP +12mm temp. Sunguard SN 70/41 HT

Air space: 18mm Argon filled

Inboard lite: 15mm mid-iron tempered +1.52mm SGP+15mm mid-iron tempered

TORRE DIAMANTE PORTA NUOVA VARESE

Location Milan, Italy
Surface 15,000 m²
Year 2016
Glazier Teleya
Architect KPF - Kohn Pedersen Fox Associates



DOUBLE GLAZING

Outboard lite: 55.2 low-iron annealed laminate Sopray Vision 60
air space: 16mm Argon filled
Inboard lite: 55.2 low iron annealed laminate

MAUTO NATIONAL AUTOMOBILE MUSEUM

Location Turin, Italy
Surface 7,500 m²
Year 2011
Glazier CAOLO
Architect CZA
Cino Zucchi Architetti



DOUBLE GLAZING

Outboard lite: 10mm low-iron tempered

Air space: 16mm Argon filled

Inboard lite: 55.2 low-iron annealed laminate with low-e

10mm low iron tempered HST

DOUBLE SKIN

[More Pictures HERE](#)

BRACCO HEADQUARTERS

Location Milan, Italy

Surface 6,000 m²

Year 2022

Architect General Planning S.r.l



DOUBLE GLAZING

outer pane: 8mm mid-iron tempered HDT Sunguard SN 70/35 HT

air space/gas: 18mm, Argon filled

inner pane: 6mm mid-iron tempered screen-printed

8mm FT HST + 1,52mm SGP with wire mesh (syntarqui) + 8mm FT HST

FINS

[More Pictures HERE](#)

ARCADIA CENTER

Location Milan, Italy
Surface 3,000 m²
Year 2020
Architect Studio Giuseppe Tortato
Architetti



DOUBLE GLAZING

outer pane: 10mm mid-iron tempered Sunguard SN 62/34 HT
air space/gas: 16mm, Argon filled
inner pane: 5mm mid-iron HS +1,52mm PVB + 5mm mid-iron HS

[More Pictures HERE](#)

PALAZZO DEL NUOTO

Location Turin, Italy
Surface 1,800 m²
Year 2011
Glazier CAOLO
Architect Arata Isozaki



DOUBLE GLAZING

outer pane: 10+10.2 low-iron annealed laminate
air space/gas: 20mm, Argon filled
inner pane: 10+10.2 low-iron annealed laminate with iplus 1.1

PSENNER DISTILLERY

Location Termeno, Italy
Surface 600 m²
Year 2012
Architect Freissinger Elzenbaumer
Architekten



DOUBLE GLAZING

outer pane: 10mm low-iron screen-printed and tempered
air space/gas: 16mm Argon filled
inner pane: 66.2 low-iron annealed laminate with low-e

[More Pictures HERE](#)

MMM CORONES

Location Termeno, Italy

Surface 750 m²

Year 2015

Architect Zaha Hadid Architects



DOUBLE GLAZING

outer pane: 12mm low-iron tempered
air space/gas: 18mm Argon filled
inner pane: 66.2mm low-iron annealed laminate with low-e

[More Pictures HERE](#)

DA VINCI AIRPORT

Location Rome, Italy

Surface 7,500 m²

Year 2023



DOUBLE GLAZING

outer pane:

10mm mid-iron tempered HST Sunguard Bright Green

air space/gas:

18mm Argon filled

inner pane:

55.2 acoustic annealed laminate

MILANO SCALO

Location Milan, Italy

Surface 6,500 m²

Year 2016

Architect Metrogramma Milano



DOUBLE GLAZING

outer pane: 66.2mm low iron annealed laminate

air space/gas: 18mm Argon filled

inner pane: 66.2mm low-iron annealed laminate with low-e

10mm mid-iron enamelled tempered HST

INTERNAL YARD

PADIGLIONE BLU SALONE NAUTICO

Location Genova, Italy

Surface 7,000 m²

Year 2009

Glazier Teleya

Architect Jean Nouvel



MONOLITHIC

3100 X 5500 mm 10mm Sunergy clear tempered + 1.52mm PVB + 10mm clear tempered

PALAZZO DI FUOCO

Location Milan, Italy

Surface 3,500 m²

Year 2018

Architect GBPA Architects



DOUBLE GLAZING

outer pane: 10mm mid-iron tempered Sunguard SN 62/34 HT
air space/gas: 16mm Argon filled
inner pane: 6mm mid-iron HS + 1,52mm PVB + 6mm mid-iron HS

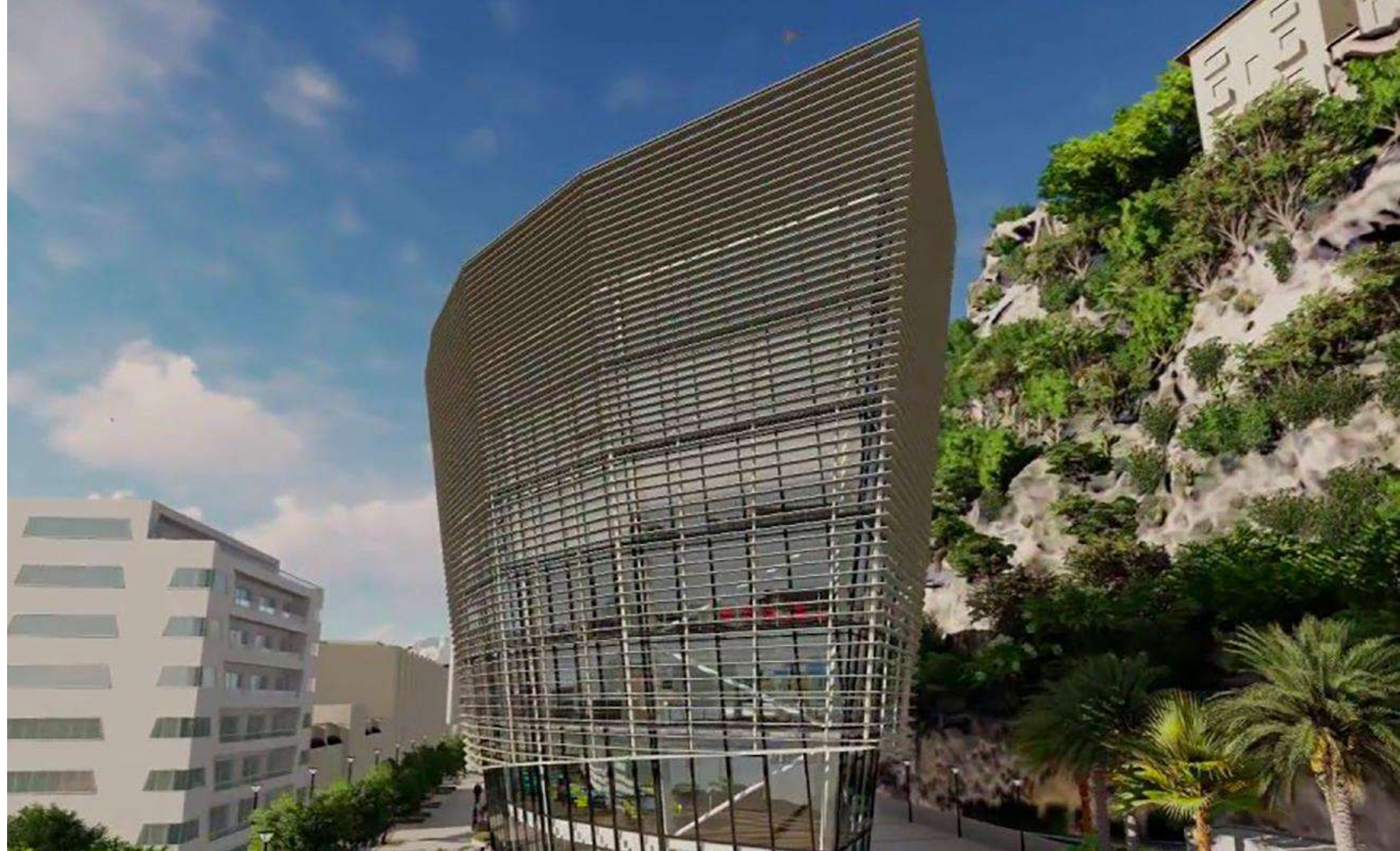
ILOT PASTEUR

Location Montecarlo, Monaco

Surface 6,500 m²

Year Scheduled for 2024

Architect CCA Christian Curau
Architecte



DOUBLE GLAZING

outer pane: 66.2mm mid-iron annealed acoustic laminate Sunguard SN 70
air space/gas: 16mm Argon filled
inner pane: 44.2mm mid-iron annealed laminate

CINEMA GAUMONT ALÉSIA

Location Paris, France

Surface 1,500 m²

Year 2016

Architect Manuelle Gautrand
Architecture



[More Pictures HERE](#)

BASE D'INSTRUCTION DE LA BSPP

Location Limeil Brévannes, France

Surface 2,500 m²

Year 2021

Architect ATELIER PHILEAS



DOUBLE GLAZING

outer pane:

air space/gas:

inner pane:

66.2mm mid-iron annealed laminate Cool-Lite SKN 145

20mm Argon filled

66.2mm mid-iron acoustic laminate

[More Pictures HERE](#)

40 LEGENDRE

Location Paris, France

Surface 4,500 m²

Year 2023

Glazier Simeon (FR)

Architect PCA-STREAM



DOUBLE GLAZING

outer pane: 8mm mid-iron tempered Sunguard SN 51 HT
air space/gas: 16mm Argon filled
inner pane: 55.2 mid-iron annealed laminate

Zanatta Vetrol S.p.A.

Via di Vittorio, 22 Montebelluna (TV) - Italy

zanattavetro.com

part of


BROMBAL GROUP